



# TERUMO

Product Catalog (US)

Conventional Needles · I.V. Catheters · Micro-Collection Products · Safety Products · Winged Infusion Sets



# Table of Contents

## Hypodermics

SurGuard®3 Safety Hypodermic Needle	3-4
Terumo Conventional Hypodermic Needles	5
1cc Tuberculin Luer Slip Syringes	5
3cc Syringes with Needle for Filling	5
Syringes without Needle	5

## Micro-collection

Surshield® Safety Blood Collection Sets	6
Multi-Sample Luer Adapter	6
Capject® Safety Lancets	7

## Winged Infusion Needle Sets

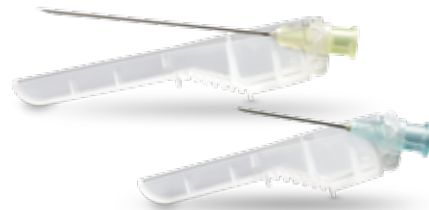
Surshield® Safety Winged Infusion Sets	8
SURFLO® Winged Infusion Sets	8

## IV Catheters

SURFLO® ETFE I.V. Catheters	9
SurFlash® Polyurethane I.V. Catheters	9

## Frequently Asked Questions and Technical Support

10



# Pick how you click.



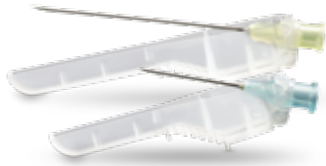
With 3 ways to activate and a broader range of sizes than most other brands, SurGuard®3 is the industry's most adaptable safety needle. Add separate thumb and finger grips, sharper needles, and competitive pricing, and you'll understand why we say SurGuard®3 is the one needle that fits *every* clinician's style.

- 3 modes of activation—thumb, finger, or hard surface
- Separate finger and thumb grips with ridges and nonslip surfaces
- Hub and needle locks for security post activation
- Broad range of sizes
- Firm injection feel
- Sharpest needles among major brands tested\*
  - 10% sharper than similar needles from Becton, Dickinson and Company
  - More comfortable injections for patients

**Bottom line:** No matter what you're looking for in a needle, you're looking for SurGuard®3.

\*Reference: Data on file. Terumo Medical Products, April 2009.

# Order the industry's most adaptable safety needle today!



## SurGuard®3 Safety Hypodermic Needle

Packaging: 100/box, 8 boxes/case (800)

Order No.	Description
SG3-1825	18G x 1" needle
SG3-1838	18G x 1 1/2" needle
SG3-2025	20G x 1" needle
SG3-2038	20G x 1 1/2" needle
SG3-2051	20G x 2" needle
SG3-2125	21G x 1" needle
SG3-2138	21G x 1 1/2" needle
SG3-2225	22G x 1" needle
SG3-2238	22G x 1 1/2" needle
SG3-2325	23G x 1" needle
SG3-2338	23G x 1 1/2" needle
SG3-2516	25G x 5/8" needle
SG3-2525	25G x 1" needle
SG3-2538	25G x 1 1/2" needle
SG3-2713	27G x 1/2" needle
SG3-3013	30G x 1/2" needle

## SurGuard®3 Hypodermic Syringes with Safety Needle

Packaging: 100/box, 4 boxes/case (400)

Order No.	Description
SG3-01T2516	1CC Syringe with 25G x 5/8" needle
SG3-01T2713	1CC Syringe with 27G x 1/2" needle
SG3-03L2025	3CC Syringe with 20G x 1" needle
SG3-03L2038	3CC Syringe with 20G x 1 1/2" needle
SG3-03L2125	3CC Syringe with 21G x 1" needle
SG3-03L2138	3CC Syringe with 21G x 1 1/2" needle
SG3-03L2225	3CC Syringe with 22G x 1" needle
SG3-03L2238	3CC Syringe with 22G x 1 1/2" needle
SG3-03L2325	3CC Syringe with 23G x 1" needle
SG3-03L2516	3CC Syringe with 25G x 5/8" needle
SG3-03L2525	3CC Syringe with 25G x 1" needle



You know what you like.  
And *whatever* your preference, you'll find it in SurGuard®3!

**SurGuard®3**  
SAFETY HYPODERMIC NEEDLE



Our double-bevel design is precision-ground and honed to exacting quality standards. This attention to detail enables Terumo needles to penetrate skin with less force, which can mean greater comfort for patients.

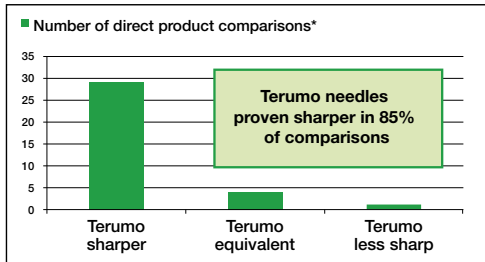
### Terumo® Conventional Hypodermic Needles

Packed: 100/box, 10 boxes/case (1,000)

Product Code	Description	Product Code	Description
■ NN2713R	27G x 1/2" needle	■ NN3013R	30G x 1/2" needle
■ NN2732R	27G x 1/4" needle	■ NN3025R	30G x 1" needle



All Competitors



\* In Independent laboratory testing, Terumo needles were shown, on average, to be the sharpest among brands tested:

- 10% sharper than BD (22G - 30G)
- 16% sharper than Covidien (22G - 27G)

### 1cc Tuberculin Luer Slip Syringes

Graduations: 0.01cc (1cc total)

Packed: 100/box, 10 boxes/case (1,000)

Product Code	Description	Product Code	Description
SS-01T	1cc TB Syringe without needle, with luer slip	SS-01T2609	1cc TB Syringe with 26G x 3/8" removable needle
SS-01T2516	1cc TB Syringe with 25G x 5/8" removable needle	SS-01T2713	1cc TB Syringe with 27G x 1/2" removable needle



### 3cc Syringes with Needle for Filling

Style: Luer Lock Tip

Graduations: 0.1cc (3cc total)

Packed: 100/box, 10 boxes/case (1,000)

Product Code	Description
SS-03L2138	3cc syringe with 21G x 1 1/2" needle



### 3cc Syringes without Needle

Graduations: 0.1cc (3cc total)

Packed: 100/box, 10 boxes/case (1,000)

Product Code	Description
SS-03L	3cc Luer Lock Tip

### 5cc Syringes without Needle

Graduations: 0.2cc (6cc total)

Packed: 100/box, 6 boxes/case (600)

Product Code	Description
SS-05L	5cc Luer Lock Tip

### 10cc Syringes without Needle

Graduations: 0.2cc (12cc total)

Packed: 100/box, 6 boxes/case (600)

Product Code	Description
SS-10L	10cc Luer Lock Tip

### 20cc Syringes without Needle

Graduations: 1.0cc (25cc total)

Packed: 50/box, 4 boxes/case (200)

Product Code	Description
SS-20L2	20cc Luer Lock Tip

### 30cc Syringes without Needle

Graduations: 1.0cc (35cc total)

Packed: 25/box, 8 boxes/case (200)

Product Code	Description
SS-30L	30cc Luer Lock Tip

### 60cc Syringes without Needle

Graduations: 1.0cc (60cc total)

Packed: 25/box, 4 boxes/case (100)

Product Code	Description
SS-60L	60cc Luer Lock Tip
SS-60ES	60cc Eccentric Luer Tip
SS-60C	60cc 2oz. Catheter Tip



### Surshield® Safety Winged Blood Collection Sets

Packed: 50/box, 10 boxes/case (500)

**Product Code**    **Description**

(12" Tubing)

MN*SVS21B30	21G x 3/4" needle
MN*SVS23B30	23G x 3/4" needle
MN*SVS25B30	25G x 3/4" needle



(7" Tubing)

MN*SVS21B18	21G x 3/4" needle
MN*SVS23B18	23G x 3/4" needle



### Multi-Sample Luer Adapter

Sterile and disposable, adapters fit into standard infusion sets transforming them into winged blood collection sets. This allows multiple draws into evacuated tubes. Accepts standard tube holders.

Packed: 100/box, 30 boxes/case (3,000)

**Product Code**    **Description**

XX*MN2000TE	VENOJECT® Multi-Sample Luer Adapter (male).
-------------	---------------------------------------------

These products have no components made of natural rubber latex.

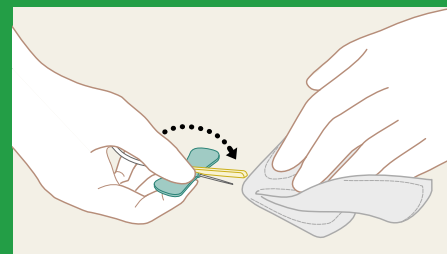
## Blood Collection Sets

# Safety

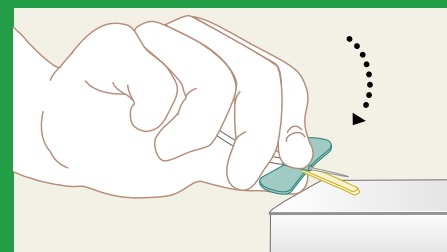
Terumo's Surshield Safety Winged Needle Sets with one-handed activation provides a solution with a cost-effective, easy to use design. Press shield over the needle until it locks into place.

- Unique needle locking mechanism helps reduce the risk of needlestick injuries
- One-handed activation for safety and ease of use
- No change in needle insertion technique
- Simple, built-in safety design is easy to use

1. Flip safety shield toward needle. Remove the needle and apply digital pressure to the site.



2. With the wing and shield between your thumb and index finger, press the safety shield against a hard surface such as a bedside table until an audible click is heard.



3. Visually confirm activation of the safety feature. (10/08)



Refer to the product labels and package insert for complete warnings, precautions, potential complications, and instructions for use.

## Micro-Collection

### Capiject Safety Lancets

High quality, single-use lancets offer the form, fit and function you've come to rely on

- **Never see or handle the sharp:**  
Automatic blade or needle retraction styles - the sharp edge is enclosed before and after use
- **No special staging required:**  
Ready to use right out of the box
- **One-step activation:**  
Convenient activation for precise and consistent results
- **Color-coded sizes:**  
Quick identification of the right product

**Packed: 200/box, 10 boxes/case (2,000)**



Catalog Number	Color	Description	Width/Gauge	Depth
200101	Pink	Blade	1.5mm	1.0mm
200102	Green	Blade	1.5mm	1.5mm
200103	Blue	Blade	1.5mm	2.0mm
200104	Orange	Needle	23G	2.25mm
200105	Purple	Needle	28G	1.25mm

These products have no components made of natural rubber latex.



**Surshield® Safety  
Winged Infusion Sets**

Packed: 50/box, 10 boxes/case (500)

Product Code	Description
<b>(3½" Tubing)</b>	
■ SV*S19BLS	19G x ¾" needle
■ SV*S21BLS	21G x ¾" needle
■ SV*S23BLS	23G x ¾" needle
■ SV*S25BLS	25G x ¾" needle

<b>(12" Tubing)</b>	
■ SV*S19BL	19G x ¾" needle
■ SV*S21BL	21G x ¾" needle
■ SV*S23BL	23G x ¾" needle
■ SV*S25BL	25G x ¾" needle



**SURFLO® Winged Infusion Sets**

Product Code	Description
<b>(3½" Tubing)</b>	
<b>Packed: 100/box, 5 boxes/case (500)</b>	
■ SV*19BLS	19G x ¾" needle
■ SV*21BLS	21G x ¾" needle
■ SV*23BLS	23G x ¾" needle
■ SV*25BLS	25G x ¾" needle

<b>(8" Tubing)</b>	
<b>Packed: 100/box, 10 boxes/case (1,000)</b>	
■ SV*25EL	25G x ½" needle
■ SV*27EL	27G x ½" needle

<b>(12" Tubing)</b>	
<b>Packed: 50/box, 10 boxes/case (500)</b>	
■ SV-18BLK	18G x ¾" needle
■ SV-19BLK	19G x ¾" needle
■ SV-21BLK	21G x ¾" needle
■ SV-22BLK	22G x ¾" needle
■ SV-23BLK	23G x ¾" needle
■ SV-25BLK	25G x ¾" needle



## I.V. Catheters



Terumo's Polyurethane I.V. Catheter enables quick and easy confirmation of placement in the vein.

With SurFlash, visual confirmation of catheter placement occurs due to a unique flashback feature. Flashback appears between the specially grooved needle and the catheter, providing medical staff with a higher certainty of proper catheter placement. The specially grooved needle also improves the ability to visualize flashback in patients where venipuncture is more difficult, and because SurFlash is made of polyurethane, which is firm at room temperature and softens at body temperature, patient comfort is enhanced, without compromising proper technique.

### SURFLO® ETFE I.V. Catheters (Large Photo)

A sharp double-bevel introducer needle plus a medical grade lubricant allow for easier penetration and smoother travel through tissue. Preview chamber in clear sure-grip hub gives immediate indication of proper placement. Flexible thinwall catheter with large inner diameter assures good blood flow. All this plus safe, easy-to-handle, tamper-evident packaging make SURFLO® I.V. Catheters a great clinical value.

**Packed: 50/box, 4 boxes/case (200)**

Product Code	Description
SR-OX1451CA	14G x 2"
SR-OX1632CA	16G x 1 1/4"
SR-OX1651CA	16G x 2"
SR-OX1664CA	16G x 2 1/2"
SR-OX1832CA	18G x 1 1/4"
SR-OX1851CA	18G x 2"
SR-OX1864CA	18G x 2 1/2"
SR-OX2025CA	20G x 1"
SR-OX2032CA	20G x 1 1/4"
SR-OX2051CA	20G x 2"
SR-OX2225CA	22G x 1"
SR-OX2419CA	24G x 3/4"

### SurFlash® Polyurethane I.V. Catheters (Not Pictured)

- Visual confirmation of catheter placement during venipuncture occurs in a flash!
- Made of polyurethane, which makes it extremely flexible, kink-resistant and durable
- Provides medical staff with higher certainty of catheter placement due to unique flashback feature
- Improves visualization for difficult venipunctures

**Packed: 50/box, 4 boxes/case (200)**

Product Code	Description
SR*FF1451	14G x 2"
SR*FF1651	16G x 2"
SR*FF1664	16G x 2 1/2"
SR*FF1832	18G x 1 1/4"
SR*FF1851	18G x 2"
SR*FF1864	18G x 2 1/2"
SR*FF2025	20G x 1"
SR*FF2032	20G x 1 1/4"
SR*FF2051	20G x 2"
SR*FF2225	22G x 1"
SR*FF2419	24G x 3/4"

These products have no components made of natural rubber latex.

## Frequently Asked Questions and Technical Support

### **Who is the Sales Rep for my area?**

Please contact us by phone or email with your address to obtain the name of your local Territory Manager. You can also visit our website, [www.TerumoTMP.com](http://www.TerumoTMP.com), for more information.

### **How can I obtain samples?**

Please contact your local Territory Manager or visit our website to request samples.

### **How can I order Terumo products through a distributor?**

Please contact your authorized distributor. To find a distributor, visit us at [www.TerumoTMP.com/Support](http://www.TerumoTMP.com/Support) to find a List of Authorized Terumo Distributors. Distributors should call Customer Administration for all questions related to orders and invoices: 800.888.3786

### **How can I obtain pricing?**

You must check with your local distributor for pricing since our business is conducted through authorized distributors.

### **Where are you located?**

The Terumo Medical Corporate office is located at:  
265 Davidson Avenue, Suite 320, Somerset, NJ 08873  
1-800-283-7866  
[www.TerumoTMP.com](http://www.TerumoTMP.com)

### **What is the shelf life of Terumo Products?**

Standard & Safety Syringes & Needles: 5 years  
Standard IV Catheters: 3 years  
Standard & Safety Blood Collection/Infusion: 3 years  
Capiject Lancets: 5 years

### **What's the difference between SurFlash® & Surflo® IV Catheters?**

SurFlash is an I.V. Polyurethane Catheter which allows for a visual confirmation of catheter placement due to its unique flashback feature. SURFLO is our regular ETFE I.V. Catheter. Both are radio-opaque and these products have no components made of natural rubber latex.

[www.TerumoTMP.com](http://www.TerumoTMP.com)

 **TERUMO** and TERUMO are trademarks owned by Terumo Corporation, Tokyo, Japan, and they are registered with the U.S. Patent & Trademark Office. CAPIJECT and SURGUARD are registered trademarks of Terumo Medical Corporation, Somerset, NJ. SURFLO, SURSHIELD and VENOJECT are registered trademarks of Terumo Corporation, Tokyo, Japan and they are registered with the U.S. Patent and Trademark Office. PM-05794 May 2022