

Quality time for better care



## Product Catalog (Canada)

Conventional Needles • I.V. Catheters  
Blood Collection Sets • Safety Products • Winged Infusion Sets

# Table of Contents

## Hypodermics

SurGuard®3 Safety Hypodermic Needle	3-4
Terumo Conventional Hypodermic Needles	5
Terumo 1cc Tuberculin Syringes	6
Terumo Hypodermic Syringes with Needle	6
Terumo Hypodermic Syringes without Needle	7
Terumo Pharmacy Trays	8

## Blood Collection Sets

Surshield® Safety Blood Collection Sets	9
Multi-Sample Luer Adapter	9

## Winged Infusion Needle Sets

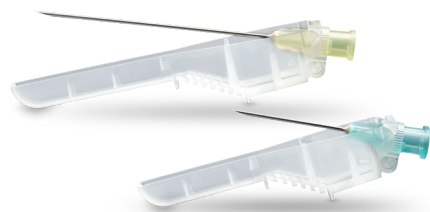
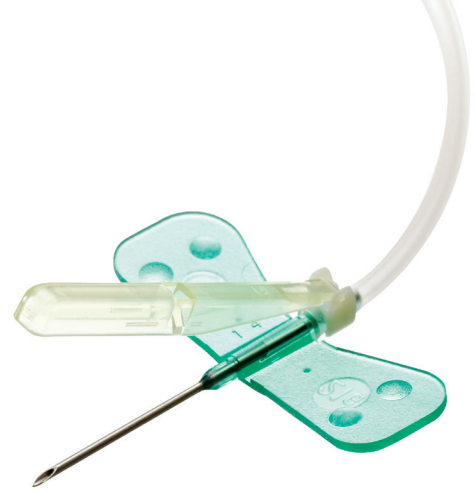
Surshield® Safety Winged Infusion Sets	10
SURFLO® Winged Infusion Sets	10

## I.V. Catheters

SURFLO® ETFE I.V. Catheters	11
SurFlash® Polyurethane I.V. Catheters	12

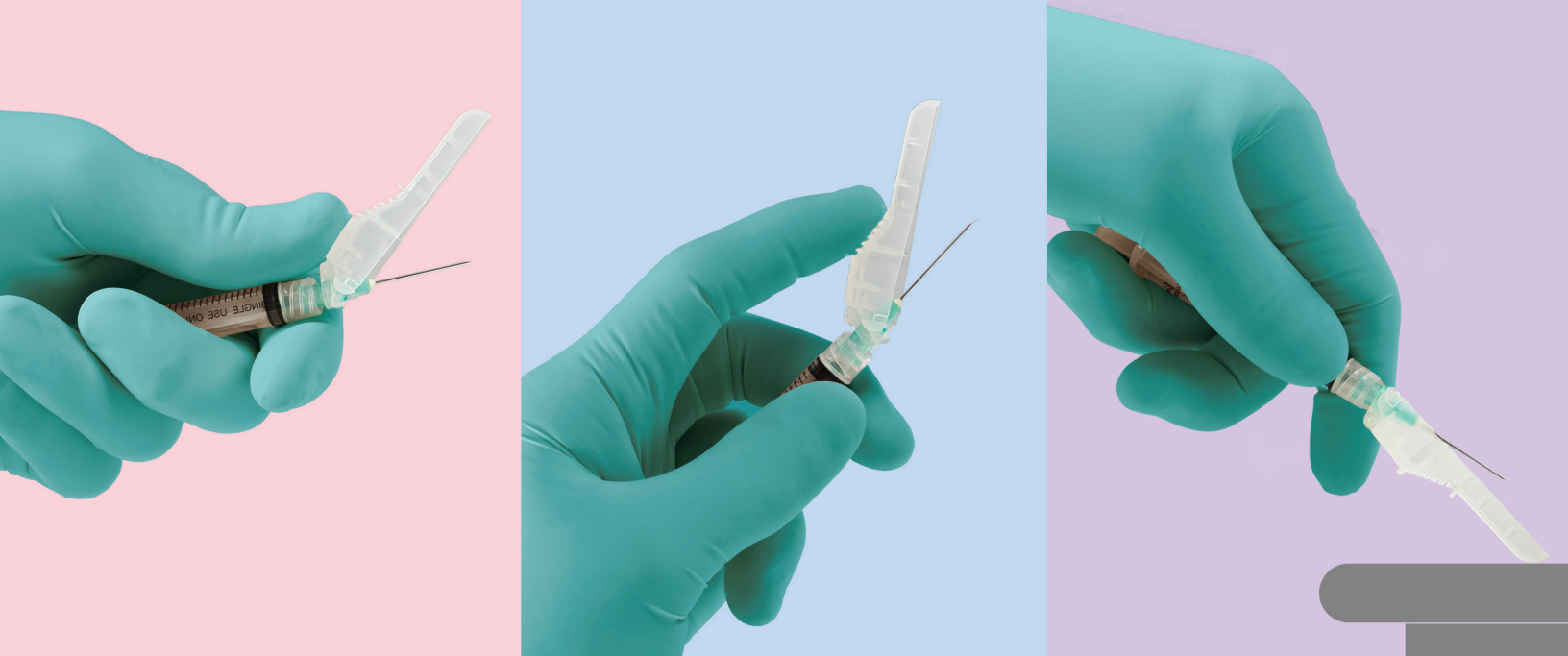
## Frequently Asked Questions and Technical Support

13





# Pick how you click.



**With 3 ways to activate** and a broader range of sizes than most other brands, SurGuard®3 is the industry's most adaptable safety needle. Add separate thumb and finger grips, sharper needles, and competitive pricing, and you'll understand why we say SurGuard®3 is the one needle that fits *every* clinician's style.

- 3 modes of activation—thumb, finger, or hard surface
- Separate finger and thumb grips with ridges and nonslip surfaces
- Hub and needle locks for security post activation
- Broad range of sizes
- Firm injection feel
- Sharpest needles among major brands tested\*
  - 10% sharper than similar needles from Becton, Dickinson and Company
  - More comfortable injections for patients

**Bottom line:** No matter what you're looking for in a needle, you're looking for SurGuard®3.

# SurGuard® 3 Safety Hypodermic Needles and Syringes



## SurGuard® 3 Safety Hypodermic Needles

Packed: 100/box, 8 boxes/case (800)

Product Code	Description
SG3-1825	18G x 1" needle
SG3-1838	18G x 1 1/2" needle
SG3-2025	20G x 1" needle
SG3-2038	20G x 1 1/2" needle
SG3-2051	20G x 2" needle
SG3-2125	21G x 1" needle
SG3-2138	21G x 1 1/2" needle
SG3-2225	22G x 1" needle
SG3-2238	22G x 1 1/2" needle
SG3-2325	23G x 1" needle
SG3-2338	23G x 1 1/2" needle
SG3-2516	25G x 5/8" needle
SG3-2525	25G x 1" needle
SG3-2538	25G x 1 1/2" needle
SG3-2713	27G x 1/2" needle
SG3-3013	30G x 1/2" needle

## SurGuard® 3 Hypodermic Syringes with Safety Needle

Packed: 100/box, 4 boxes/case (400)

Product Code	Description
SG3-01T2516	1CC Syringe with 25G x 5/8" needle
SG3-01T2713	1CC Syringe with 27G x 1/2" needle
SG3-03L2025	3CC Syringe with 20G x 1" needle
SG3-03L2038	3CC Syringe with 20G x 1 1/2" needle
SG3-03L2125	3CC Syringe with 21G x 1" needle
SG3-03L2138	3CC Syringe with 21G x 1 1/2" needle
SG3-03L2225	3CC Syringe with 22G x 1" needle
SG3-03L2238	3CC Syringe with 22G x 1 1/2" needle
SG3-03L2325	3CC Syringe with 23G x 1" needle
SG3-03L2516	3CC Syringe with 25G x 5/8" needle
SG3-03L2525	3CC Syringe with 25G x 1" needle

\*Data on file.

These products have no components made of natural rubber latex.

**SurGuard® 3**  
SAFETY HYPODERMIC NEEDLE

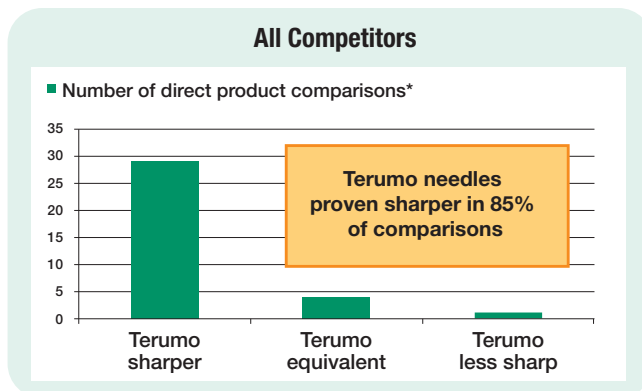
## Conventional Hypodermic Needles

Our double-bevel design is precision-ground and honed to exacting quality standards. This attention to detail enables Terumo needles to penetrate skin with less force, which can mean greater comfort for patients.

### Terumo® Conventional Hypodermic Needles

Packed: 100/box, 10 boxes/case (1,000)

Product Code	Description
■ NN1825R	18G x 1" needle
■ NN1838R	18G x 1½" needle
■ NN1925R	19G x 1" needle
■ NN1938R	19G x 1½" needle
■ NN2025R	20G x 1" needle
■ NN2038R	20G x 1½" needle
■ NN2125R	21G x 1" needle
■ NN2138R	21G x 1½" needle
■ NN2225R	22G x 1" needle
■ NN2238R	22G x 1½" needle
■ NN2325R	23G x 1" needle
■ NN2338R	23G x 1½" needle
■ NN2516R	25G x 5/8" needle
■ NN2522R	25G x 7/8" needle
■ NN2525R	25G x 1" needle
■ NN2538R	25G x 1½" needle
■ NN2613R	26G x ½" needle
■ NN2713R	27G x ½" needle
■ NN2732R	27G x 1 ¼" needle
■ NN3013R	30G x ½" needle
■ NN3025R	30G x 1" needle



\* In Independent laboratory testing, Terumo needles were shown, on average, to be the sharpest among brands tested:

- 10% sharper than BD (22G - 30G)
- 16% sharper than Covidien (22G - 27G)

\*Data on file. These products have no components made of natural rubber latex.

# Conventional Hypodermic Syringes



## 1CC Tuberculin Syringes

TERUMO TB syringes have clear, bold scale markings which assure dosage control and accuracy. The package is tamper evident for greater protection of the sterile contents.

**Packed: 100/box, 10 boxes/case (1,000)**

**Graduations: 0.01cc (1cc total)**

Product Code	Description
SS-01T	1cc TB syringe without needle, luer slip
SS-01T2516	1cc TB syringe with 25G x 5/8" removable needle
SS-01T2609	1cc TB syringe with 26G x 3/8" removable needle
SS-01T2713	1cc TB syringe with 27G x 1/2" removable needle

## 3CC Syringes with Needle

**Packed: 100/box, 10 boxes/case (1,000)**

**Style: Luer Lock Tip**

**Graduations: 0.1cc (3cc total)**

Product Code	Description
SS-03L2025	3cc, 20G x 1" needle
SS-03L2038	3cc, 20G x 1 1/2" needle
SS-03L2125	3cc, 21G x 1" needle
SS-03L2138	3cc, 21G x 1 1/2" needle
SS-03L2225	3cc, 22G x 1" needle
SS-03L2238	3cc, 22G x 1 1/2" needle
SS-03L2325	3cc, 23G x 1" needle
SS-03L2338	3cc, 23G x 1 1/2" needle
SS-03L2516	3cc, 25G x 5/8" needle
SS-03L2525	3cc, 25G x 1" needle

## 5CC Syringes with Needle

**Packed: 100/box, 6 boxes/case (600)**

**Style: Luer Lock Tip**

**Graduations: 0.2cc (6cc total)**

Product Code	Description
SS-05L2025	5cc, 20G x 1" needle
SS-05L2038	5cc, 20G x 1 1/2" needle
SS-05L2125	5cc, 21G x 1" needle
SS-05L2138	5cc, 21G x 1 1/2" needle
SS-05L2225	5cc, 22G x 1" needle
SS-05L2238	5cc, 22G x 1 1/2" needle

## 10CC Syringes with Needle

**Packed: 100/box, 6 boxes/case (600)**

**Style: Luer Lock Tip**

**Graduations: 0.2cc (12cc total)**

Product Code	Description
SS-10L2025	10cc, 20G x 1" needle
SS-10L2038	10cc, 20G x 1 1/2" needle
SS-10L2125	10cc, 21G x 1" needle
SS-10L2138	10cc, 21G x 1 1/2" needle

These products have no components made of natural rubber latex.

## Hypodermic Syringes

The plastic blister package is tamper evident for assurance of sterility. The peel-packs provide waste disposal cost savings versus the bulky plastic tube containers of some other syringes.



### 3CC Syringes

Packed: 100/box, 10 boxes/case (1,000)  
Graduations: 0.1cc (3cc total)

Product Code	Description
<b>Without Needles:</b>	
SS-03L	Luer Lock Tip
SS-03S	Luer Slip Tip

### 20CC Syringes

Packed: 50/box, 4 boxes/case (200)  
Graduations: 1cc (25cc total)

Product Code	Description
<b>Without Needles:</b>	
SS-20L2	Luer Lock Tip
SS-20S2	Luer Slip Tip
SS-20ES2	Eccentric Luer Tip

### 5CC Syringes

Packed: 100/box, 6 boxes/case (600)  
Graduations: 0.2cc (6cc total)

Product Code	Description
<b>Without Needles:</b>	
SS-05L	Luer Lock Tip
SS-05S	Luer Slip Tip

### 30CC Syringes

Packed: 25/box, 8 boxes/case (200)  
Graduations: 1cc (35cc total)

Product Code	Description
<b>Without Needles:</b>	
SS-30L	Luer Lock Tip
SS-30S	Luer Slip Tip
SS-30ES	Eccentric Luer Tip

### 10CC Syringes

Packed: 100/box, 6 boxes/case (600)  
Graduations: 0.2cc (12cc total)

Product Code	Description
<b>Without Needles:</b>	
SS-10L	Luer Lock Tip
SS-10S	Slip Tip
SS-10ES	Eccentric Luer Tip

### 60CC Syringes

Packed: 25/box, 4 boxes/case (100)  
Graduations: 1cc (60cc total)

Product Code	Description
<b>Without Needles:</b>	
SS-60L	Luer Lock Tip
SS-60ES	Eccentric Luer Tip
SS-60C	2 oz. Catheter Tip

These products have no components made of natural rubber latex.

## Terumo® Pharmacy Trays

- Terumo syringes are neatly stacked inside a tray for easy removal.
- Convenient peel-back cover insures sterility.
- Trays are individually embossed with the appropriate syringe size for accurate identification when stacked on shelves.
- The unique tray design requires no additional packaging components, which reduces waste and increases cost efficiency.

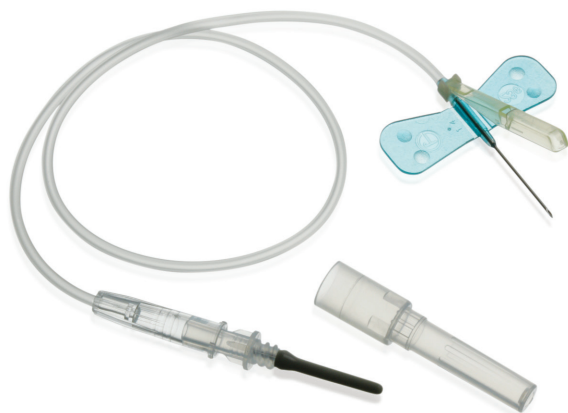


Product Code	Description
SS10LT	10cc Luer Lock Tip without Needle Pharmacy Tray <i>Packed: 25 syringes/tray, 8 trays/case (200)</i> Graduations: 0.2cc (12cc total)
SS20LT	20cc Luer Lock Tip without Needle Pharmacy Tray <i>Packed: 25 syringes/tray, 8 trays/case (200)</i> Graduations: 1.0cc (25cc total)
SS30LT	30cc Luer Lock Tip without Needle Pharmacy Tray <i>Packed: 10 syringes/tray, 12 trays/case (120)</i> Graduations: 1.0cc (35cc total)
SS60LT	60cc Luer Lock Tip without Needle Pharmacy Tray <i>Packed: 10 syringes/tray, 12 trays/case (120)</i> Graduations: 1.0cc (60cc total)

These products have no components made of natural rubber latex.



## Surshield® Safety Winged Blood Collection Sets



### 12" Tubing

Packed: 50/box, 10 boxes/case (500)

Product Code	Description
MN*SVS21B30	21G x 3/4" needle
MN*SVS23B30	23G x 3/4" needle
MN*SVS25B30	25G x 3/4" needle



### 7" Tubing

Packed: 50/box, 10 boxes/case (500)

Product Code	Description
MN*SVS21B18	21G x 3/4" needle
MN*SVS23B18	23G x 3/4" needle

## Multi-Sample Luer Adapter



Sterile and disposable, adapters fit into standard infusion sets transforming them into winged blood collection sets. This allows multiple draws into evacuated tubes. Accepts standard tube holders.

Packed: 100/box, 30 boxes/case (3,000)

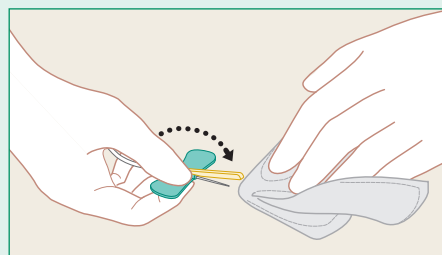
Product Code	Description
XX*MN2000TE	VENOJECT® Multi-Sample Luer Adapter (male).

These products have no components made of natural rubber latex.

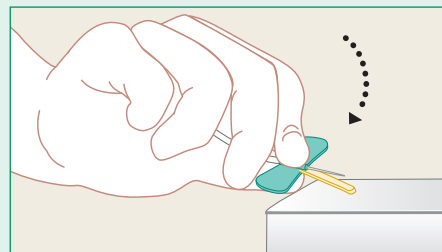
Terumo's Surshield Safety Winged Needle Sets with one-handed activation provides a solution with a cost-effective, easy to use design. Press shield over the needle until it locks into place.

- Unique needle locking mechanism helps reduce the risk of needlestick injuries
- One-handed activation for safety and ease of use
- No change in needle insertion technique
- Simple, built-in safety design is easy to use

1. Flip safety shield toward needle. Remove the needle and apply digital pressure to the site.



2. With the wing and shield between your thumb and index finger, press the safety shield against a hard surface such as a bedside table until an audible click is heard.

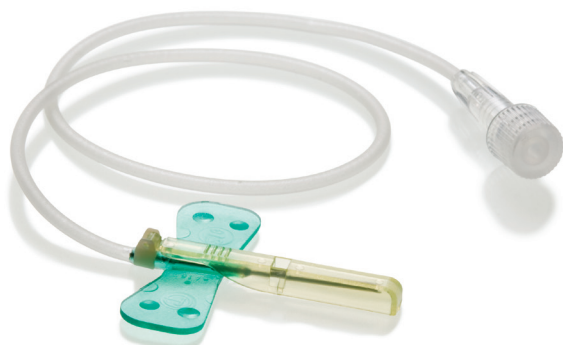


3. Visually confirm activation of the safety feature.



Refer to the product labels and package insert for complete warnings, precautions, potential complications, and instructions for use.

## Winged Infusion Sets



### Surshield® Safety Winged Infusion Sets

#### 3½" Tubing

Packed: 50/box, 10 boxes/case (500)

Product Code	Description
■ SV*S19BLS	19G x ¾" needle
■ SV*S21BLS	21G x ¾" needle
■ SV*S23BLS	23G x ¾" needle
■ SV*S25BLS	25G x ¾" needle

#### 12" Tubing

Packed: 50/box, 10 boxes/case (500)

Product Code	Description
■ SV*S19BL	19G x ¾" needle
■ SV*S21BL	21G x ¾" needle
■ SV*S23BL	23G x ¾" needle
■ SV*S25BL	25G x ¾" needle



### SURFLO® Winged Infusion Sets

#### 3½" Tubing

Packed: 100/box, 5 boxes/case (500)

Product Code	Description
■ SV*19BLS	19G x ¾" needle
■ SV*21BLS	21G x ¾" needle
■ SV*23BLS	23G x ¾" needle
■ SV*25BLS	25G x ¾" needle

#### 8" Tubing

Packed: 100/box, 10 boxes/case (1,000)

Product Code	Description
■ SV*25EL	25G x ½" needle
■ SV*27EL	27G x ½" needle

#### 12" Tubing

Packed: 50/box, 10 boxes/case (500)

Product Code	Description
■ SV-18BLK	18G x ¾" needle
■ SV-19BLK	19G x ¾" needle
■ SV-21BLK	21G x ¾" needle
■ SV-22BLK	22G x ¾" needle
■ SV-23BLK	23G x ¾" needle
■ SV-25BLK	25G x ¾" needle

These products have no components made of natural rubber latex.

## SURFLO® ETFE I.V. Catheters

A sharp double-bevel introducer needle plus a medical grade lubricant allow for easier penetration and smoother travel through tissue. Preview chamber in clear sure-grip hub gives immediate indication of proper placement. Flexible thinwall catheter with large inner diameter assures good blood flow. All this plus safe, easy-to-handle, tamper-evident packaging make SURFLO® I.V. Catheters a great clinical value.



*Packed: 50/box, 4 boxes/case (200)*

Product Code	Description
■ SR-OX1451CA	14G x 2"
■ SR-OX1632CA	16G x 1 ¼"
■ SR-OX1651CA	16G x 2"
■ SR-OX1664CA	16G x 2 ½"
■ SR-OX1832CA	18G x 1 ¼"
■ SR-OX1851CA	18G x 2"
■ SR-OX1864CA	18G x 2 ½"
■ SR-OX2025CA	20G x 1"
■ SR-OX2032CA	20G x 1 ¼"
■ SR-OX2051CA	20G x 2"
■ SR-OX2225CA	22G x 1"
■ SR-OX2419CA	24G x ¾"

These products have no components made of natural rubber latex.

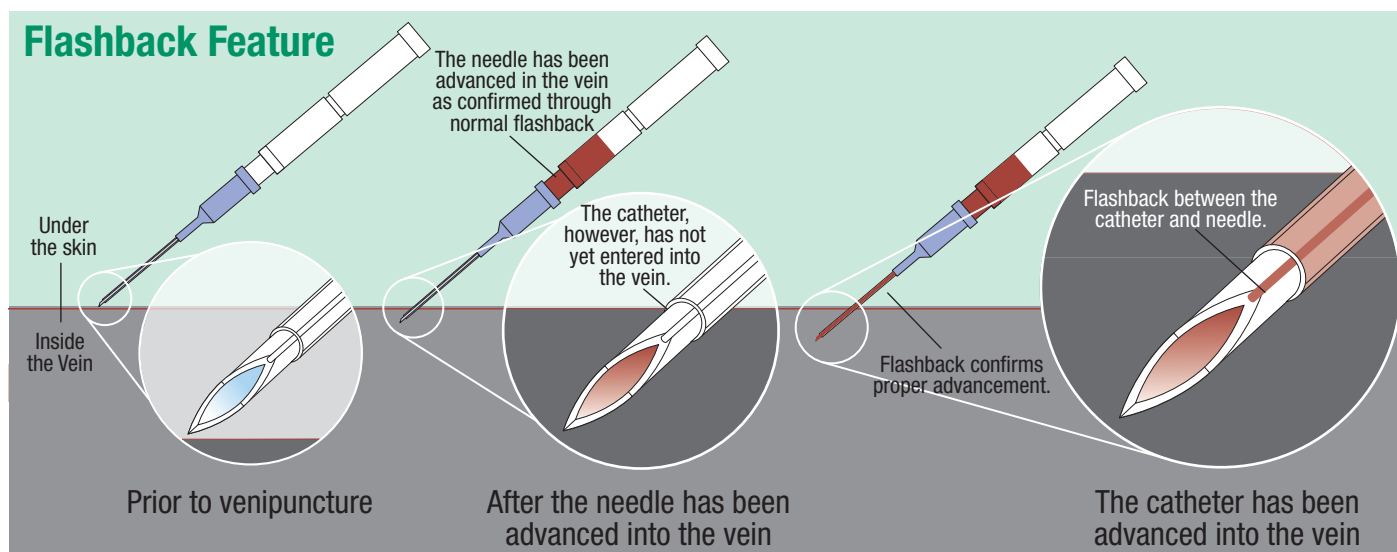
# SurFlash® Polyurethane I.V. Catheters

With SurFlash®, visual confirmation of catheter placement occurs due to a unique flashback feature. Flashback appears between the specially grooved needle and the catheter, providing medical staff with a higher certainty of proper catheter placement. The specially grooved needle also improves the ability to visualize flashback in patients where venipuncture is more difficult, and because SurFlash® is made of polyurethane, which is firm at room temperature and softer at body temperatures, patient comfort is enhanced without compromising proper technique.



**Packed: 50/box, 4 boxes/case (200)**

Product Code	Description
SR*FF1451	14G x 2"
SR*FF1651	16G x 2"
SR*FF1664	16G x 2 ½"
SR*FF1832	18G x 1 ¼"
SR*FF1851	18G x 2"
SR*FF1864	18G x 2 ½"
SR*FF2025	20G x 1"
SR*FF2032	20G x 1 ¼"
SR*FF2051	20G x 2"
SR*FF2225	22G x 1"
SR*FF2419	24G x ¾"



**Note:** The needle insertion angle in the illustration differs from actual insertion angle.

These products have no components made of natural rubber latex.



## Frequently Asked Questions and Technical Support

### ■ How can I contact Terumo Medical Products?

Please visit our website, [www.TerumoTMP.com](http://www.TerumoTMP.com), for more information or phone Customer Care at 833.883.7866

### ■ How can I obtain samples?

Please visit our website, [www.TerumoTMP.com](http://www.TerumoTMP.com) to request samples.

### ■ How can I order Terumo products through a distributor?

To find a distributor, please see Terumo website: [www.TerumoTMP.com](http://www.TerumoTMP.com) and click on Customer Support to find a List of Authorized Terumo distributors. Distributors should call Customer Administration for all questions related to orders and invoices: 833.883.7866

### ■ How can I obtain pricing?

You must check with your local distributor for pricing since our business is conducted through authorized distributors.

### ■ Where are you located?

Terumo Medical Canada, Inc.  
10911 Keele Street, Units 2-4, Vaughan, Ontario, L6A 5A6  
Phone: 833.883.7866 / Fax: 647.715.5973  
[terumocanadacustomer.admin@terumomedical.com](mailto:terumocanadacustomer.admin@terumomedical.com)

### ■ What is the shelf life of Terumo products?

Standard & Safety Syringes & Needles: 5 years  
Standard I.V. Catheters: 3 years  
Standard & Safety Blood Collection/Infusion: 3 years

### ■ What's the difference between SurFlash® & SURFLO® I.V. Catheters?

SurFlash is an I.V. Polyurethane Catheter which allows for a visual confirmation of catheter placement due to its unique flashback feature. SURFLO is our regular ETFE I.V. Catheter. Both are radio-opaque and these products have no components made of natural rubber latex.

[www.TerumoTMP.com](http://www.TerumoTMP.com)

**RX ONLY.** The advertisement is directed to physicians only, and not to consumers. Refer to product labels and packaging insert for complete warnings, precautions, potential complications, and instructions for use. Products may not have regulatory approval in all countries. Please contact your local sales representative if you have questions about the availability of products in your area.



**TERUMO** and TERUMO are trademarks owned by Terumo Corporation, Tokyo, Japan, and they are registered with the U.S. Patent & Trademark Office. SURFLO, SURSHIELD, SURFLASH and VENOJECT are registered trademarks of Terumo Corporation, Tokyo, Japan and they are registered with the U.S. Patent & Trademark Office. SURGUARD is a registered trademark of Terumo Medical Corporation, Somerset, NJ. © 2023 Terumo Medical Corporation. All rights reserved. All brand names are trademarks or registered trademarks of their respective owners. Rev. 2/23 PM-06704

**TERUMO MEDICAL CANADA, INC.** 10911 Keele Street, Units 2-4, Vaughan, Ontario, Canada L6A 5A6